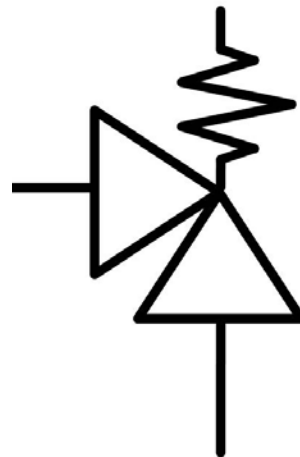
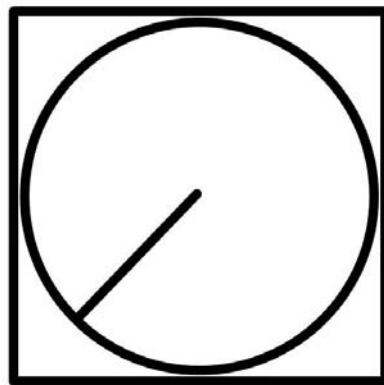
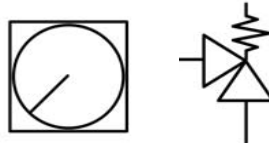









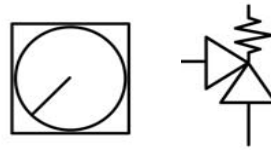
9. Instrumentation and Safety Valves




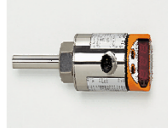





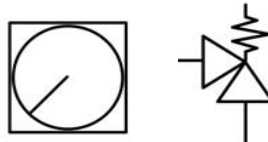
## 9. Instrumentation and Safety Valves

Product name	Description	L x H (mm)	Δ P. Bar max	T min/max °C	Material	Dn	Art.no. ITS	Picture
ITS 41	Pressure Gauge Cock PN 125 BSP	-	125	-	Brass	1/4"	327990	 Equivalent for ECON 861M
	On request, several types possible							
ITS 599N *	Safety Valve PN 40				GG25	15	327668	 Picture with disc lifter
	gasdichte kap zonder kleplichter					20	327669	
	On request, several types possible					25	327670	
						32	327671	
						40	327672	
						50	327673	
ITS 1526	Safety Valve Br Br Vit BSP 3-10 bar			-10°C till 300°C	Bronze	1/2"	327713	
	On request, several types possible					3/4"	327714	
						1"	327715	
						1 1/4"	327716	
						1 1/2"	327717	
						2"	327718	
ITS 517 *	Safety Valve MS Vit BSP 3-10 bar				Brass	1/2"	355500	
	On request, several types possible					3/4"	355501	
						1"	355502	
						1 1/4"	355503	
						1 1/2"	355504	
	Costs for adjusting: 10,00					2"	355505	
ITS PF2609	Pressure Transmitt. -1/0 bar	46 x 24	-	-	Stainless Steel		328200	








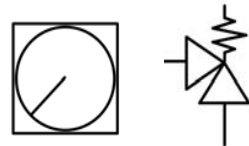
## 9. Instrumentation and Safety Valves

Nummer	Description	L x H (mm)	$\Delta$ P. Bar max	T min/max °C	Material	Dn	Art.no. ITS	Picture
ITS SI5000	Flow Transmitter  <i>On request, several types possible</i>						328203	
ITS TN2530	Temperature Transmitter  <i>On request, several types possible</i>						328202	
ITS PF2954	Pressure Transmitter 0/10 bar  <i>On request, several types possible</i>	91,1 x 48	10	80°C	Stainless Steel		328201	
ITS Well 72	Pressure Transmitter  <i>On request, several types possible</i>	573 x 48					328220	
							328221	
							328222	
ITS Swing 61	Levelswitch  <i>On request, several types possible</i>						328223	






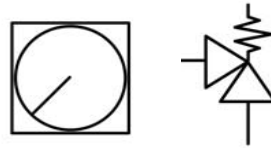
## 9. Instrumentation and Safety Valves

Product name	Description	L x H (mm)	$\Delta P$ . Bar max	T min/max °C	Material	Dn	Art.no. ITS	Picture
ITS Bar 66	Pressure Transmitter						328235	
ITS Kon 61	Water Detection Sensor						328240	
	<b>On request, several types possible</b>							
ITS bar 52	Pressure Transmitter						328230	
	<b>On request, several types possible</b>							
ITS BLG250 *	Econ BLG250 / 100SS- 25ss	95 x 63	12	125°C	Stainless Steel		328244	
ITS BLG150 *	Econ BLG150 / 100SS-25ss	95 x 63	12	120°C	ST. Polycarb		328245	
	<b>Bilge Sensor Econ BLG250 / 100SS- 25ss</b>							
ITS 6311	Bourdon tube pressure gauge K63 0-1 G1/4;O				Stainless Steel	1/4"	327499	
	Bourdon tube pressure gauge K63 0-6 G1/4;O					1/4"	327501	
	Bourdon tube pressure gauge K63 0-10 G1/4;O					1/4"	327504	
	Bourdon tube pressure gauge K63 0-250 G1/4;O					1/4"	327505	
	Bourdon tube pressure gauge K63 -1/0 G1/4;O					1/4"	327500	
	Bourdon tube pressure gauge K63 -1/0,6 G1/4;O					1/4"	327506	
	<b>On request, several types possible</b>							




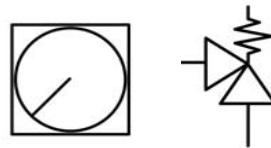
## 9. Instrumentation and Safety Valves

Product name	Description	L x H (mm)	$\Delta$ P. Bar max	T min/max °C	Material	Dn	Art.no. ITS	Picture
ITS 2352B	Bimetal Temperature Gauge Insert 63mm	63 x 63	-	0°C till 120°C	Stainless Steel	1/2"	327997	
ITS 2985	Bimetal Temperature Gauge Insert 80mm	80 x 63	-	0°C till 120°C	Stainless Steel	1/2"	729956	
ITS 1382 K63 *	Bourdon tube pressure gauge K63 -1 till 0 bar	84,5 x 33			Stainless Steel	1/4"	350315	 <p>ECON 1382</p>
	Bourdon tube pressure gauge K63 -1 till 0,6 bar					1/4"	350316	
	Bourdon tube pressure gauge K63 -1 till 1,5 bar					1/4"	350317	
	Bourdon tube pressure gauge K63 -1 till 3 bar					1/4"	350318	
	Bourdon tube pressure gauge K63 -1 till 5 bar					1/4"	350319	
	Bourdon tube pressure gauge K63 -1 till 9 bar					1/4"	350320	
	Bourdon tube pressure gauge K63 -1 till 15 bar					1/4"	350321	
	Bourdon tube pressure gauge K63 0 till 1 bar					1/4"	350322	
	Bourdon tube pressure gauge K63 0 till 1,6 bar					1/4"	350323	
	Bourdon tube pressure gauge K63 0 till 2,5 bar					1/4"	350324	
	Bourdon tube pressure gauge K63 0 till 4 bar					1/4"	350325	
	Bourdon tube pressure gauge K63 0 till 6 bar					1/4"	350326	
	Bourdon tube pressure gauge K63 0 till 10 bar					1/4"	350327	
	Bourdon tube pressure gauge K63 0 till 16 bar					1/4"	350328	
	Bourdon tube pressure gauge K63 0 till 25 bar					1/4"	350329	
	Bourdon tube pressure gauge K63 0 till 40 bar					1/4"	350330	
	Bourdon tube pressure gauge K63 0 till 60 bar					1/4"	350331	
Bourdon tube pressure gauge K63 0 till 100 bar					1/4"	350332		
Bourdon tube pressure gauge K63 0 till 160 bar					1/4"	350333		
ITS 1645 *	Thermometer, -30°C till 50°C, Insert 40mm				Alumimium	1/2"	334520	
	Identical - insert 50mm					1/2"	334521	
	Identical - insert 63mm					1/2"	334522	
	Thermometer, 0°C till 100°C - Insert 40mm					1/2"	334523	
	Identical - insert 50mm					1/2"	334524	
	Identical - insert 63mm					1/2"	334525	
	Thermometer, 0°C till 120°C - Insert 40mm					1/2"	334526	
	Identical - insert 50mm					1/2"	334527	
	Identical - insert 63mm					1/2"	334528	



## 9. Instrumentation and Safety Valves

Product name	Description	L x H (mm)	$\Delta$ P. Bar max	T min/max °C	Material	Dn	Art.no. ITS	Picture
ITS 334 K63 *	Bourdon tube pressure gauge K63 -1 till 0 bar					1/4"	366825	
	Identical -1 till 0,6 bar					1/4"	366826	
	Identical -1 till 1,5 bar					1/4"	366827	
	Identical -1 till 3 bar					1/4"	366828	
	Identical -1 till 5 bar					1/4"	366829	
	Identical -1 till 9 bar					1/4"	366830	
	Identical -1 till 15 bar					1/4"	366831	
	Identical - 0 till 1 bar					1/4"	366832	
	Identical - 0 till 1,6 bar					1/4"	366833	
	Identical - 0 till 2,5 bar					1/4"	366834	
	Identical - 0 till 4 bar					1/4"	366835	
	Identical - 0 till 6 bar					1/4"	366836	
	Identical - 0 till 10 bar					1/4"	366837	
	Identical - 0 till 16 bar					1/4"	366838	
	Identical - 0 till 25 bar					1/4"	366839	
	Identical - 0 till 40 bar					1/4"	366840	
	Identical - 0 till 60 bar					1/4"	366841	
Identical - 0 till 100 bar					1/4"	366842		
Identical - 0 till 160 bar					1/4"	366843		

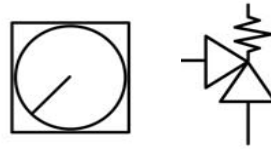


## 9. Instrumentation and Safety Valves


Up date 7 augustus

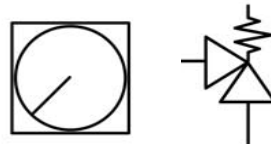
Product name	Description	L x H (mm)	$\Delta$ P. Bar max	T min/max °C	Material	Dn	Art.no. ITS	Picture
ITS BLS9200-S5 *	Bilge sensor BLG-BLS9200-S5-LRS Incl 5 mtr cable / min 10 till 90 grC V max 500VDC / 250Vac 3 Ampere LRS approved						366900	No picture available

Substitute for BLG-250



### 9. Instrumentation and Safety Valves

Product name	Description	L x H (mm)	Δ P. Bar max	T min/max °C	Material	Dn	Art.no. ITS	Picture
ITS 3531*	Temperature meter box 63mm with thermowell Type A10A with standard diameter from 12,5mm (insert length 63 mm = ø 15 mm) Connection G 1/2" external thread			-200 till 40			.370350	
				-120 till 40			.370351	
				-100 till 50			.370352	
				-80 till 40			.370353	
				-60 till 40			.370354	
				-40 till 40			.370355	
				-30 till 30			.370356	
				-30 till 50			.370357	
				0 till 60			.370358	
				0 till 100			.370359	
				0 till 120			.370360	
				0 till 160			.370361	
				0 till 200			.370362	
				0 till 250			.370363	
				0 till 300			.370364	
0 till 400	.370365							
0 till 500	.370366							
0 till 600	.370367							
0 till 700	.370368							



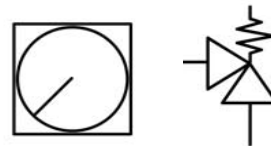
### 9. Instrumentation and Safety Valves

Product name	Description	L x H (mm)	Bereik Bar	T min/max °C	Material	Dn	Art.no. ITS	Picture
ITS 1382 K100*	Bourdon Tube Pressure Gauge Stainless Steel 304 Glycerine filled		-1 till 0		Stainless Steel 304	1/2"	.370425	
			-1 till 0,6			1/2"	.370426	
			-1 till 1,5			1/2"	.370427	
			-1 till 3			1/2"	.370428	


	-1 till 5			1/2"	.370429
	-1 till 9			1/2"	.370430
	-1 till			1/2"	.370431
	0 till 1			1/2"	.370435
	0 till 1,6			1/2"	.370436
	0 till 2,5			1/2"	.370437
	0 till 4			1/2"	.370438
	0 till 6			1/2"	.370439
	0 till 10			1/2"	.370440
	0 till 16			1/2"	.370441
	0 till 25			1/2"	.370442
	0 till 40			1/2"	.370443
	0 till 60			1/2"	.370444
	0 till 100			1/2"	.370445
	0 till 160			1/2"	.370446
				1/2"	.370460



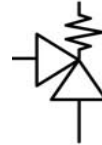
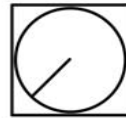
art.nr Pressure gauge cock 1/2"




## 9. Instrumentation and Safety Valves

Product name	Description	L x H (mm)	Bereik Bar	T min/max °C	Material	Dn	Art.no. ITS	Picture		
ITS 1382 K63 Baumer	Bourdon Tube Pressure Gauge Stainless Steel 304 Glycerine filled		-1 till 0		Stainless Steel 304	1/4"	.370450			
			-1 till 0,6				1/4"		.370451	
			-1 till 1,5				1/4"		.370452	
			-1 till 3				1/4"		.370453	
			-1 till 5				1/4"		.370454	
			-1 till 9				1/4"		.370455	
			-1 till				1/4"		.370456	
			0 till 1						1/4"	.370460
			0 till 1,6						1/4"	.370461
			0 till 2,5						1/4"	.370462
			0 till 4						1/4"	.370463
			0 till 6						1/4"	.370464
			0 till 10						1/4"	.370465
			0 till 16						1/4"	.370466

		0 till 25		1/4"	.370467
		0 till 40		1/4"	.370468
		0 till 60		1/4"	.370469
		0 till 100		1/4"	.370470
		0 till 160		1/4"	.370471



## 9. Instrumentation and Safety Valves

Product name	Description	L x H (mm)	Bereik Bar	T min/max °C	Material	Dn	Art.no. ITS	Picture
ITS 1382 K100 Baumer	Bourdon Pressure Gauge Stainless Steel 304 Glycerine filled		-1 till 0		Stainless Steel 304	1/2"	.370480	
			-1 till 0,6			1/2"	.370481	
			-1 till 1,5			1/2"	.370482	
			-1 till 3			1/2"	.370483	
			-1 till 5			1/2"	.370484	
			-1 till 9			1/2"	.370485	
			-1 till			1/2"	.370486	
			0 till 1			1/2"	.370490	
			0 till 1,6			1/2"	.370491	
			0 till 2,5			1/2"	.370492	
			0 till 4			1/2"	.370493	
			0 till 6			1/2"	.370494	
			0 till 10			1/2"	.370495	
			0 till 16			1/2"	.370496	
			0 till 25			1/2"	.370497	
			0 till 40			1/2"	.370498	
			0 till 60			1/2"	.370499	
			0 till 100			1/2"	.370500	
			0 till 160			1/2"	.370501	